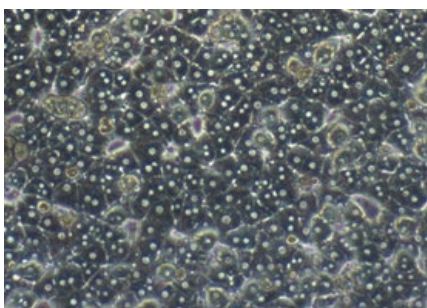




*XenoTech offers hepatocyte products for all your drug development needs.*

### Cryoplateable Animal Hepatocytes

Cryoplateable animal hepatocytes are a convenient alternative to using fresh hepatocytes. These hepatocytes attach to cell culture dishes in a manner similar to that observed with freshly isolated hepatocytes. When cultured under appropriate conditions, cryoplateable animal hepatocytes can be used for long-term stability/metabolism studies and induction screening.



Representative lot of cryoplateable rat hepatocytes

Species available:

- Dog (Beagle)
- Monkey (Cyno)
- Mouse (CD-1)
- Rat (SD, Wistar, Wistar-Han)

### Cryopreserved Animal Hepatocytes

Sekisui XenoTech's cryopreserved animal hepatocytes provide intact, viable hepatocytes that contain the major hepatic drug-metabolizing enzymes as well as the co-factors required to study the four categories of biotransformation: hydrolysis, reduction, oxidation and conjugation. XenoTech offers cryopreserved animal hepatocytes from multiple species and recommends using these hepatocytes for *in vitro* metabolism studies. Both male and female pools are available for each species.

Species available:

- Dog
- Monkey
- Mouse
- Rabbit
- Rat
- Minipig

Sekisui XenoTech provides the following characterization for all cryopreserved animal hepatocytes:

- AMY (Assured Minimum Yield)
- % Viability
- 7-Ethoxycoumarin O-dealkylation
- 7-Hydroxycoumarin glucuronidation
- 7-Hydroxycoumarin sulfonation

Features and benefits for cryopreserved products:

- Long-term reproducibility
- Convenient and ready to use
- Cryopreserved the same day as isolation, ensuring quality preparations
- Custom preparations available
- Full characterization data available online at [www.xenotech.com](http://www.xenotech.com)

### Fresh Animal Hepatocytes

As a main provider of fresh animal hepatocytes to the pharmaceutical industry, Sekisui XenoTech offers a variety of clinically-relevant species. Fresh hepatocytes are available in suspension or cultured on collagen coated plates and are an ideal alternative to *in vivo* testing.

Species available:

- Mouse (CD1)
- Rat (Sprague-Dawley)

Formats Available:

- 6-well plate
- 12-well plate
- 24-well plate
- 48-well plate
- 96-well plate
- Suspensions

XenoTech makes it easy to plan ahead. We post our fresh animal isolation calendar online two months prior to the isolations, giving you ample time to schedule studies and order the products you need.

### Custom Hepatocyte Preparations

Don't see what you're looking for? No problem; Sekisui XenoTech routinely prepares custom fresh and cryopreserved animal hepatocytes. Let XenoTech's experienced, dedicated custom products team prepare your next lot of animal hepatocytes.

### Hepatocyte Media

*OptiThaw Hepatocyte Kit (K8000 & K8100)*

**OptiTHAW**

Sekisui XenoTech's **OptiThaw** hepatocyte kit contains a nutrient-rich media used in thawing and isolating cryopreserved cells. The **OptiThaw** kit makes it easy to achieve maximum cell yield and viability for each preparation. The kit includes cell culture media optimized for thawing cryopreserved hepatocytes plus our **OptiCount** solution for determining cell yield and viability counts.

*OptiPlate Hepatocyte Media (K8200)*

**OptiPLATE**

XenoTech's **OptiPlate** media is used when plating attachable and inducible cryopreserved dog, monkey, mouse, rat, etc. hepatocytes. It is necessary to re-suspend the cell pellet in **OptiPlate** hepatocyte media before seeding the cells onto culture dishes. Plateable cells resuspended in this media attach to most collagen-coated surfaces.

*OptiCulture Hepatocyte Media (K8300)*

**OptiCULTURE**

XenoTech's **OptiCulture** hepatocyte media is recommended for maintaining attachment of cryopreserved Beagle dog, Cynomolgus monkey, CD1 mouse, Sprague-Dawley rat cultured hepatocytes, as well as fresh plated hepatocytes. This media is recommended for feeding and dosing of cultured hepatocytes.

*OptiIncubate Hepatocyte Media (K8400)*

**OptiINCUBATE**

Sekisui XenoTech's **OptiIncubate** hepatocyte media is recommended for both fresh and cryopreserved hepatocyte suspension and plated incubations.

*OptiMatrix Hepatocyte Overlay (K8600-50)*

**OptiMATRIX**

XenoTech's **OptiMatrix** increases confluency, preserves viability, structure and appearance, assists network formation, and improves excretory function when plating hepatocytes.